



14-3-3 θ/τ (phospho Ser232) Polyclonal Antibody

Catalog No	YP-Ab-03592
Isotype	IgG
Reactivity	Human;Mouse;Rat
Applications	WB;IHC;IF;ELISA
Gene Name	YWHAQ
Protein Name	14-3-3 protein theta
Immunogen	The antiserum was produced against synthesized peptide derived from human 14-3-3 θ/τ around the phosphorylation site of Ser232. AA range:196-245
Specificity	Phospho-14-3-3 θ/τ (S232) Polyclonal Antibody detects endogenous levels of 14-3-3 θ/τ protein only when phosphorylated at S232.
Formulation	Liquid in PBS containing 50% glycerol, 0.5% BSA and 0.02% sodium azide.
Source	Polyclonal, Rabbit,IgG
Purification	The antibody was affinity-purified from rabbit antiserum by affinity-chromatography using epitope-specific immunogen.
Dilution	Western Blot: 1/500 - 1/2000. Immunohistochemistry: 1/100 - 1/300. Immunofluorescence: 1/200 - 1/1000. ELISA: 1/5000. Not yet tested in other applications.
Concentration	1 mg/ml
Purity	$\geq 90\%$
Storage Stability	-20°C/1 year
Synonyms	YWHAQ; 14-3-3 protein theta; 14-3-3 protein T-cell; 14-3-3 protein tau; Protein HS1
Observed Band	28kD
Cell Pathway	Cytoplasm. In neurons, axonally transported to the nerve terminals.
Tissue Specificity	Abundantly expressed in brain, heart and pancreas, and at lower levels in kidney and placenta. Up-regulated in the lumbar spinal cord from patients with sporadic amyotrophic lateral sclerosis (ALS) compared with controls, with highest levels of expression in individuals with predominant lower motor neuron involvement.
Function	function:Adapter protein implicated in the regulation of a large spectrum of both general and specialized signaling pathway. Binds to a large number of partners, usually by recognition of a phosphoserine or phosphothreonine motif. Binding generally results in the modulation of the activity of the binding partner.,similarity:Belongs to the 14-3-3 family.,subcellular location:In neurons, axonally transported to the nerve terminals.,subunit:Homodimer. Interacts with PCTK1 (By similarity). Interacts with SSH1. Interacts with CDKN1B ('Thr-198' phosphorylated form); the interaction translocates CDKN1B to the cytoplasm.,tissue specificity:Abundantly expressed in brain, heart and pancreas, and at lower levels in kidney and placenta. Up-regulated in the lumbar spinal cord from patients with sporadic amyotrophic lateral sclerosis (ALS) compared with



controls, with highest levels of expression in i

Background

This gene product belongs to the 14-3-3 family of proteins which mediate signal transduction by binding to phosphoserine-containing proteins. This highly conserved protein family is found in both plants and mammals, and this protein is 99% identical to the mouse and rat orthologs. This gene is upregulated in patients with amyotrophic lateral sclerosis. It contains in its 5' UTR a 6 bp tandem repeat sequence which is polymorphic, however, there is no correlation between the repeat number and the disease. [provided by RefSeq, Jul 2008],

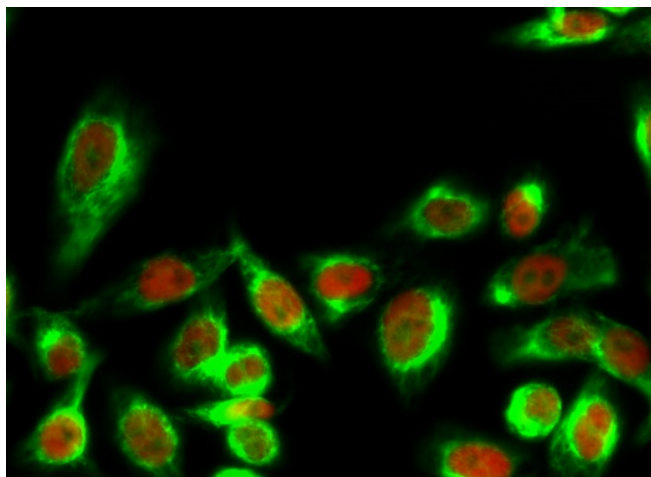
matters needing attention

Avoid repeated freezing and thawing!

Usage suggestions

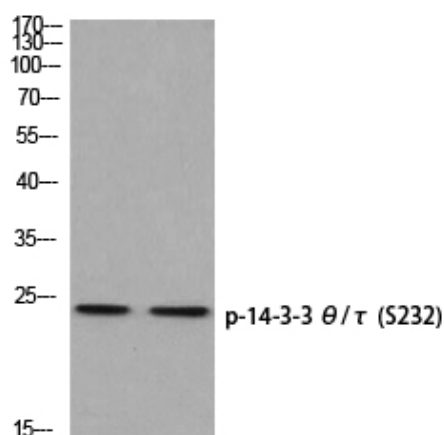
This product can be used in immunological reaction related experiments. For more information, please consult technical personnel.

Products Images

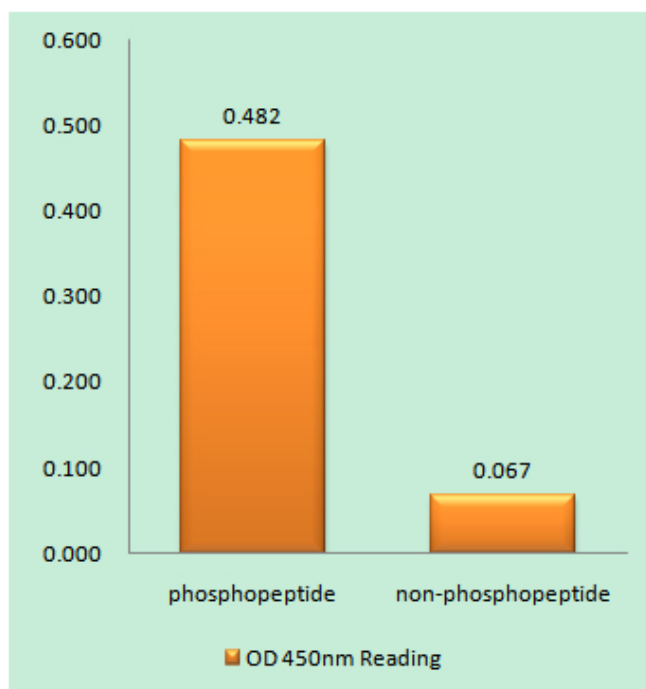


Immunofluorescence analysis of Hela cell. 1, 14-3-3 θ/τ (phospho Ser232) Polyclonal Antibody (green) was diluted at 1:200 (4° overnight). (red) was diluted at 1:200 (4° overnight). 2, Goat Anti Rabbit Alexa Fluor 488 Catalog: RS3211 was diluted at 1:1000 (room temperature, 50min). Goat Anti Mouse Alexa Fluor 594 Catalog: RS3608 was diluted at 1:1000 (room temperature, 50min).

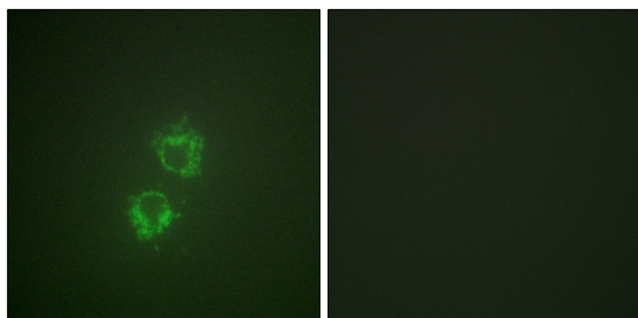
293T MOUSE-BRAIN



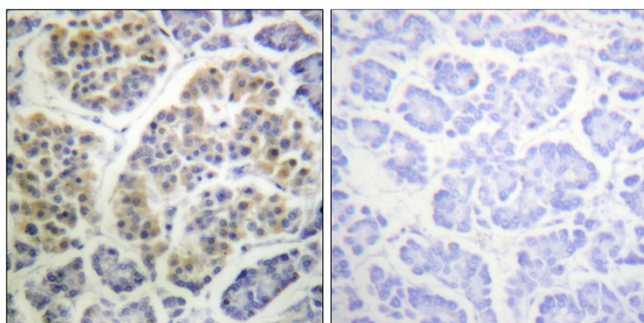
Western blot analysis of 293T MOUSE-BRAIN using p-14-3-3 θ/τ (S232) antibody. Antibody was diluted at 1:500



Enzyme-Linked Immunosorbent Assay (Phospho-ELISA) for Immunogen Phosphopeptide (Phospho-left) and Non-Phosphopeptide (Phospho-right), using 14-3-3 thet/tau (Phospho-Ser232) Antibody



Immunofluorescence analysis of HeLa cells, using 14-3-3 thet/tau (Phospho-Ser232) Antibody. The picture on the right is blocked with the phosphopeptide.



Immunohistochemistry analysis of paraffin-embedded human pancreas, using 14-3-3 thet/tau (Phospho-Ser232) Antibody. The picture on the right is blocked with the phosphopeptide.